

Quick Start

Congratulations on purchasing KEDIA USB fingerprint reader: a versatile, high quality scanning device that can be used for a variety of security applications. We at KEDIA appreciate your business!

Pre requisites :

Google chrome - Stable Version (Example : 54.0.2840.99) – Click on [Installation & Disable auto update](#)

Step 1. Install driver

- When you plug in your fingerprint reader to your PC for the first time, KEDIA- Biometric Driver should install automatically if your PC is connected to the Internet. It may take up to a few minutes to complete.
 - If for any reason this does not happen, you can download it from [this page](#) and install it manually. (As Below)

Step 2. Please check the Windows version you are using.

- [Windows XP](#)

To determine whether your computer is running a 32-bit or 64-bit version of the Microsoft Windows operating system, click your operating system below:

1. Click **Start > Run**.
2. Type “msinfo32.exe” then click **OK**.
3. On the navigation pane, select **System Summary**.
4. Locate Processor under Item in the details pane. Take note of the value.
 - If the value that corresponds to Processor starts with x86, the computer is running a 32-bit version of the Windows operating system.
 - If the value that corresponds to Processor starts with ia64 or AMD64, the computer is running a 64-bit version of the Windows operating system.

- [Windows 7](#)

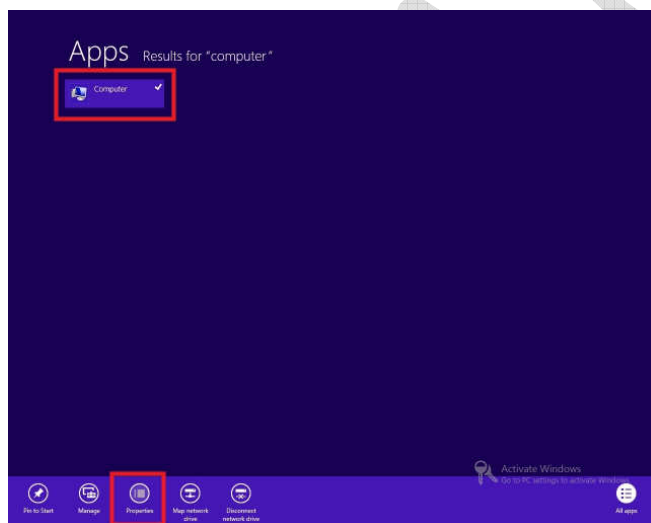
1. Click **Start**.
2. Type “system” in the **Search Programs and Files** field, and then click **System** in the Programs list.

Note: Do not press ENTER after typing "system", instead wait until the search has generated its list.

3. The operating system appears as follows:
 - For a 64-bit version operating system: “64-bit Operating System” appears as the System type under System.
 - For a 32-bit version operating system: “32-bit Operating System” appears as the System type under System.

- [Windows 8](#)

1. On the Start Screen, type "computer". It will automatically open the search results.



2. Click **Computer** then click **Properties**. The Windows Basic Information page will appear. Under System, you will be able to see the bit-version on the System Type field.

System	
Rating:	System rating is not available
Processor:	Intel(R) Xeon(R) CPU X5650 @ 2.67GHz 2.67 GHz (2 processors)
Installed memory (RAM):	2.00 GB
System type:	64-bit Operating System
Pen and Touch:	No Pen or Touch Input is available for this Display

After knowing the version of Windows Operating system, select the appropriate drivers:

Downloaded Drivers

Windows XP **sgdrinstallv70bit32**

Windows 7/8 (32 bit) **sgdrinstallv70bit32**

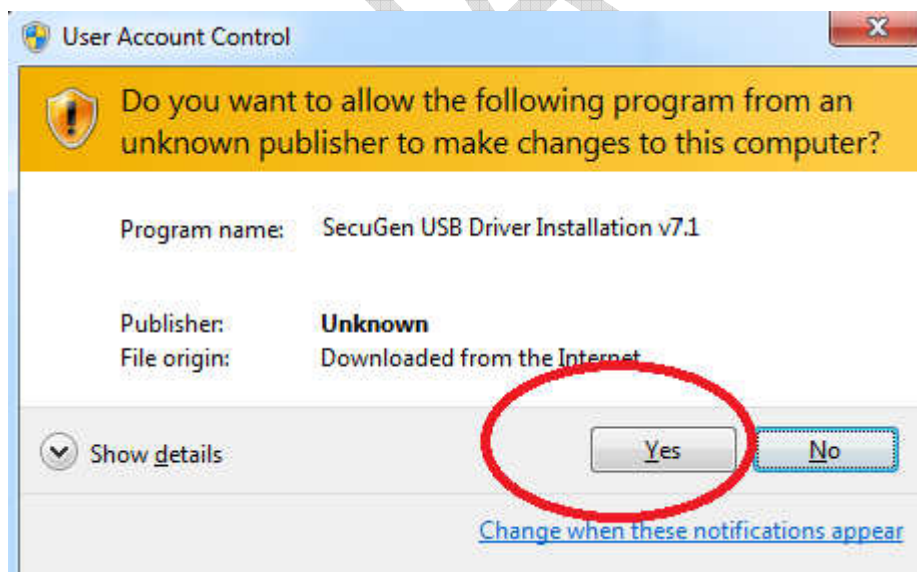
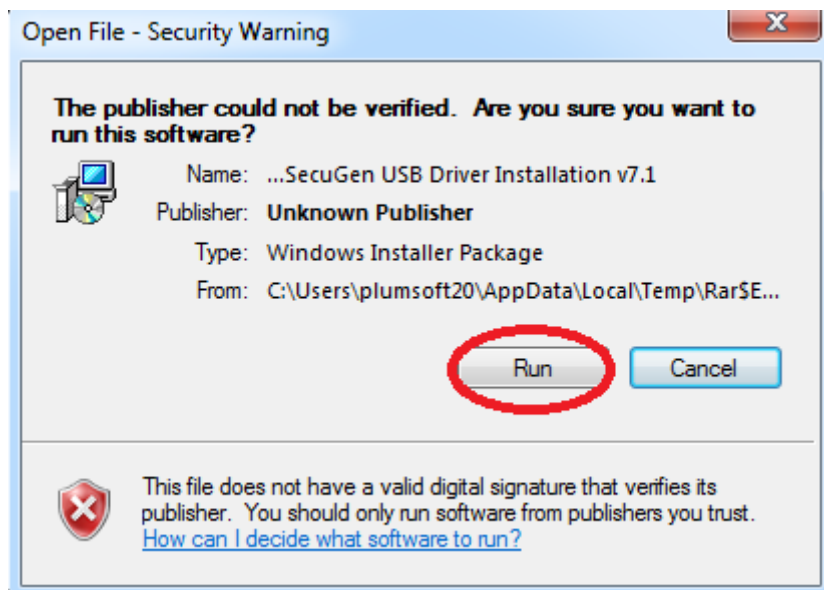
Windows 7/8 (64 bit) **sgdrinstallv70bit64**

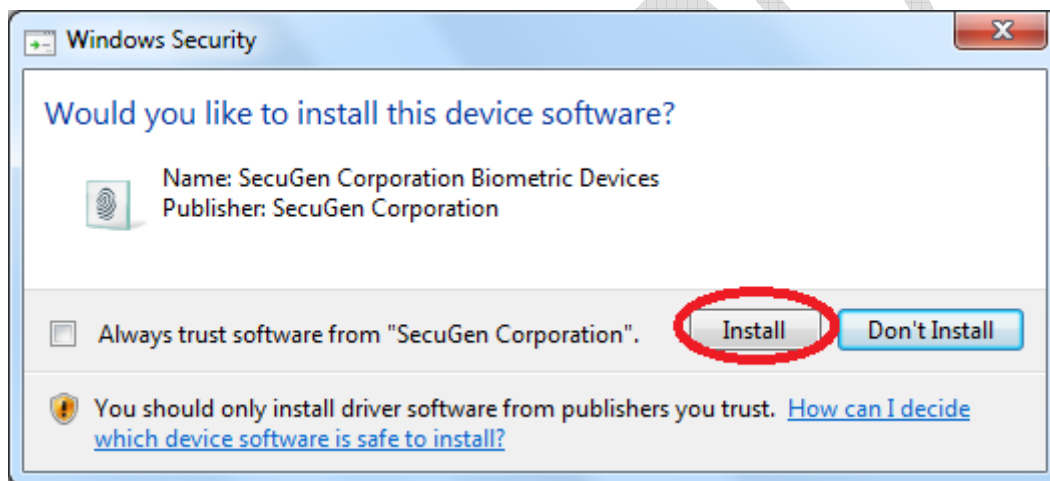
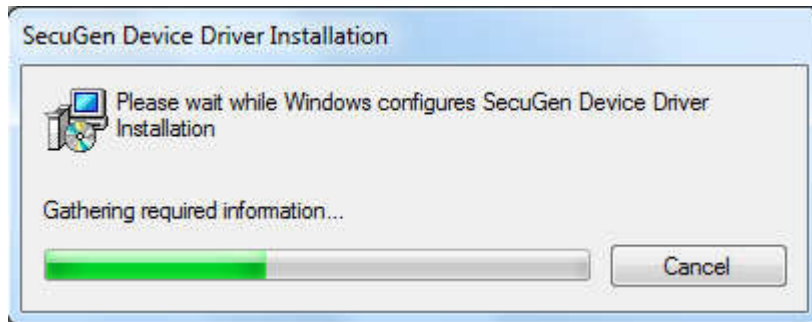
Step 3 : Install the two files from the downloaded folder

Run **SecuGen USB Driver Installation.exe** (As Below)

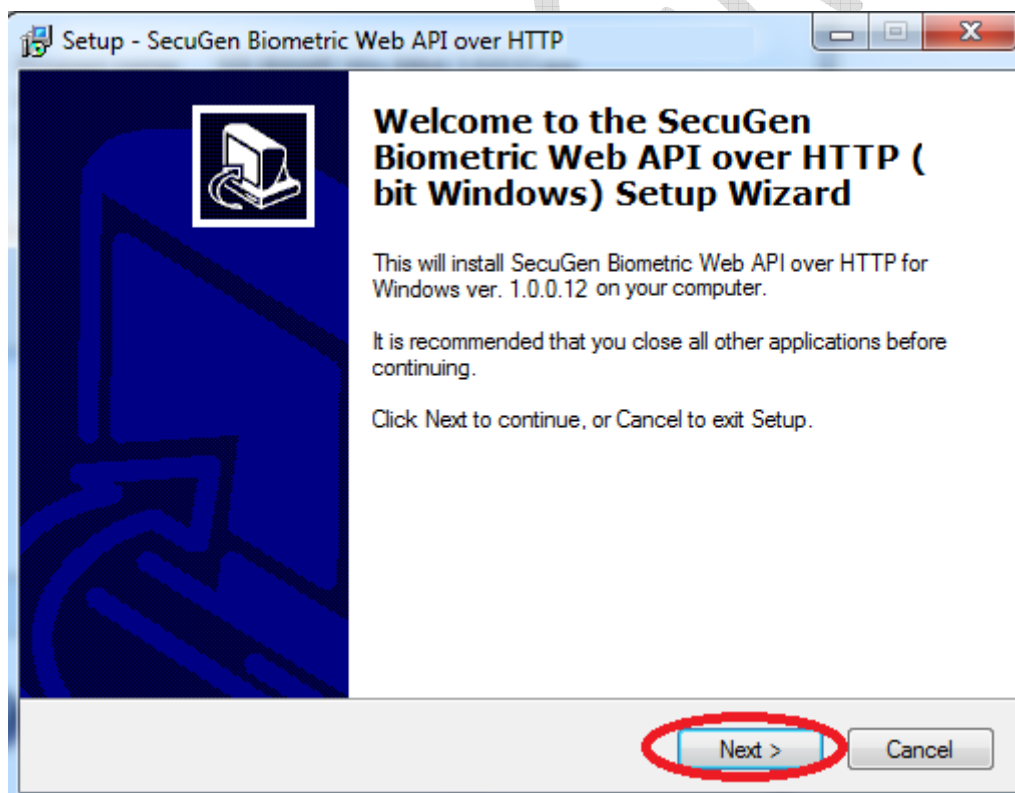
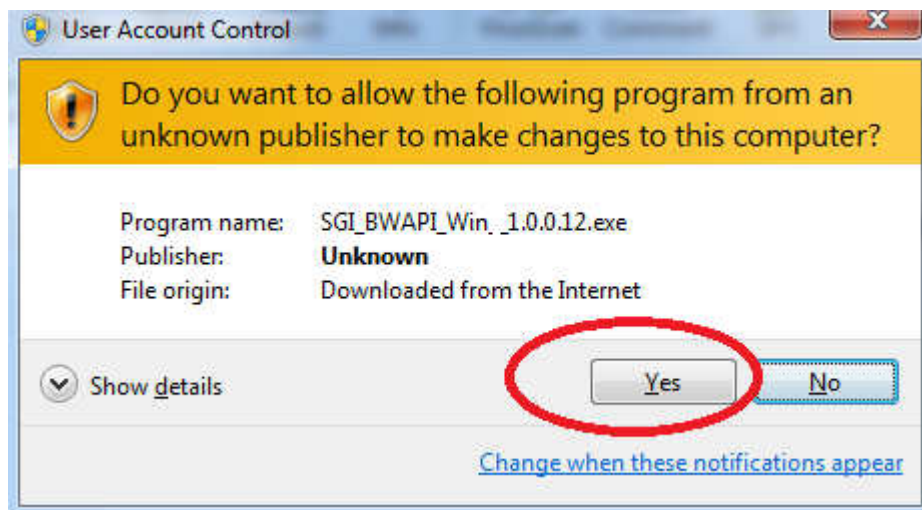
Run **SGL_BWAPI_Win_1.0.0.20.exe** (As Below)

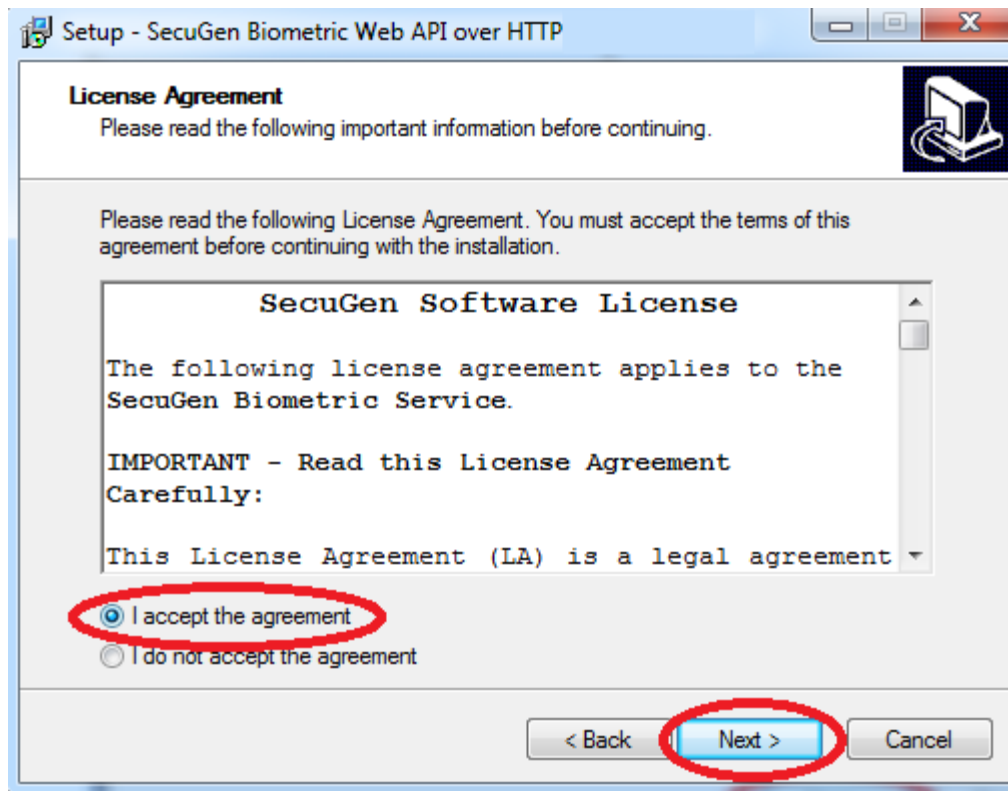
Install **SecuGen USB Driver Installation.exe** from the downloaded folder





Install **SGI_BWAPI_Win_1.0.0.12.exe** from the downloaded folder





Setup - SecuGen Biometric Web API over HTTP

User Information
Please enter your information.

User Name:

Organization:

< Back **Next >** Cancel

